

Vol: SUD OUEST FRANCE (ZONES VFR 11 ET 12)

Niveau de vol maxi: 20

LFBZ BIARRITZ PAYS BASQUE

METAR: LFBZ 131430Z AUTO 19007KT 110V250 CAVOK 12/04 Q1017 NOSIG=

TAF LONG: LFBZ 131100Z 1312/1412 23007KT 9999 BKN060 TEMPO 1312/1318 BKN025
TEMPO 1317/1408 3000 -RA BKN020=

LFBY DAX SEYRESSE

METAR: LFBY 131411Z 21009KT 9999 FEW033 SCT050 BKN090 13/05 Q1016=

TAF COURT: LFBY 130800Z 1309/1318 20010KT 9000 SCT020 BKN035 TEMPO 1309/1318
21015G25KT 4000 RADZ SCT015 BKN025=

LFBM MONT DE MARSAN

METAR: LFBM 131430Z AUTO 23007KT 170V260 CAVOK 13/06 Q1016 BECMG
22015G30KT=

TAF LONG: LFBM 131400Z 1315/1415 23010KT CAVOK TEMPO 1320/1323 22015G25KT
BECMG 1322/1324 BKN014 BKN030 TEMPO 1400/1412 4000 -RA BKN007 PROB40
TEMPO 1403/1406 BKN004 BECMG 1414/1415 BKN020=

LFBC CAZAUX

METAR: LFBC 131430Z AUTO 23013KT 210V270 5000 DZ BR BKN019 BKN026
BKN039 12/11 Q1014 TEMPO 24025G35KT RA BKN005 BKN010=

TAF LONG: LFBC 131400Z 1315/1415 24015G25KT 8000 -RA SCT010 BKN015 OVC030
TEMPO 1315/1321 24025G35KT 4000 RA BKN005 BKN010 BECMG 1321/1322
28020G35KT BKN020 TEMPO 1412/1415 SHRA BKN020TCU=

LFBA AGEN LA GARENNE

METAR: LFBA 131430Z AUTO 10006KT CAVOK 06/05 Q1016 TEMPO 4000 -RA=

TAF COURT: LFBA 131400Z 1315/1324 10008KT 9999 BKN030 TEMPO 1315/1324 4000
-RA BKN020=

LFBD BORDEAUX MERIGNAC

METAR: LFBD 131430Z AUTO 23013KT 9999 -RA BKN011 BKN038 OVC046
12/11 Q1013 TEMPO 26020G35KT 2500 RA=

TAF LONG: LFBD 131100Z 1312/1418 26015G25KT 9999 BKN030 TEMPO 1312/1321
2500 RA BKN010 OVC020 PROB40 TEMPO 1315/1322 26020G35KT BECMG
1322/1324 26015KT BECMG 1410/1412 26015G25KT TEMPO 1414/1418
26020G40KT 2500 RA BKN010 OVC025 TX13/1412Z TN10/1406Z=

LFBT TARBES LOURDES PYRENEES

METAR: LFBT 131430Z AUTO 27010KT 9999 OVC092 13/05 Q1017 NOSIG=

TAF LONG: LFBT 131100Z 1312/1412 26010KT 9999 SCT025 BKN035 TEMPO 1318/1409
3000 -RA BKN020=

LFBP PAU PYRENEES

METAR: LFBP 131430Z AUTO 26011KT 9999 BKN098 13/05 Q1017 NOSIG=

TAF LONG: LFBP 131100Z 1312/1412 24008KT 9999 BKN025 BKN065 TEMPO 1318/1409
3000 -RA BKN015=

LFGR RODEZ AVEYRON

METAR: LFGR 131430Z AUTO 22009KT 5000 -RA BR OVC009/// ///TCU 04/04
Q1016 TEMPO BKN005=

TAF LONG: LFGR 131100Z 1312/1412 17007KT 9999 BKN025 TEMPO 1312/1409 4000
-RA BKN005 BECMG 1313/1315 23010KT BKN008 PROB30 TEMPO 1320/1323
24015G25KT BECMG 1323/1401 27010KT PROB30 TEMPO 1323/1405 28016G26KT
BECMG 1409/1411 BKN018=

LFBE BERGERAC ROUMANIERE

METAR: LFBE 131430Z AUTO 18008KT 150V210 9999 FEW030/// BKN054///
OVC068/// ///TCU 10/08 Q1014 TEMPO 3000 RA BKN005 OVC015 BECMG
21015G25KT=

TAF LONG: LFBE 131100Z 1312/1412 16010KT 9999 BKN020 TEMPO 1312/1322 3000
RA BKN005 OVC015 BECMG 1313/1315 21015G25KT TEMPO 1322/1402 4500
-SHRA SCT008 BKN015TCU BECMG 1400/1402 24012KT=

LFSL BRIVE SOUILLAC

METAR: LFSL 131430Z AUTO 15005KT 110V180 6000 OVC003 05/04 Q1014
TEMPO 2000 -RA=

TAF COURT: LFSL 131400Z 1315/1324 16008KT 9999 BKN008 TEMPO 1315/1322 2000
-RA OVC003 BECMG 1322/1324 BKN025=

LFCK CASTRES MAZAMET

METAR: LFCK 131430Z AUTO 07006KT 9999 OVC025 08/05 Q1018 NOSIG=

TAF COURT: LFCK 131400Z 1315/1324 VRB02KT 9999 BKN030 BECMG 1317/1319
25005KT TEMPO 1318/1322 -RA=

Pas de METAR, TAF, SPECI pour : LFCZ LFCI LFDB LFDH LFCG

FIR LFBB BORDEAUX

SIGMET reçu le Mercredi 13 décembre 2017 à 13:43 UTC:

LFBB SIGMET 1 VALID 131600/132000 LFPW-

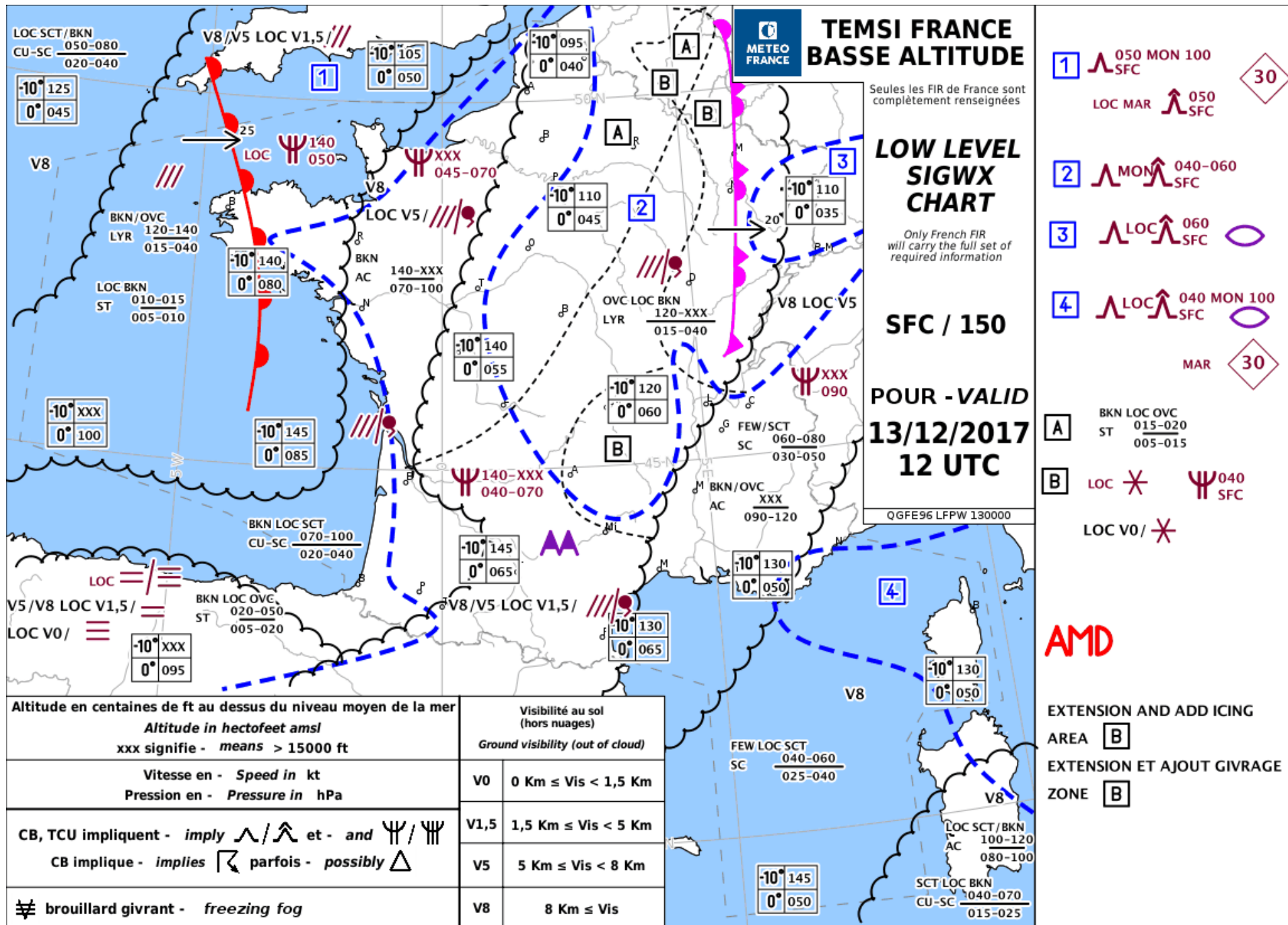
LFBB BORDEAUX FIR/UIR SEV TURB FCST WI N4445 W00145 - N4630 W00130 -

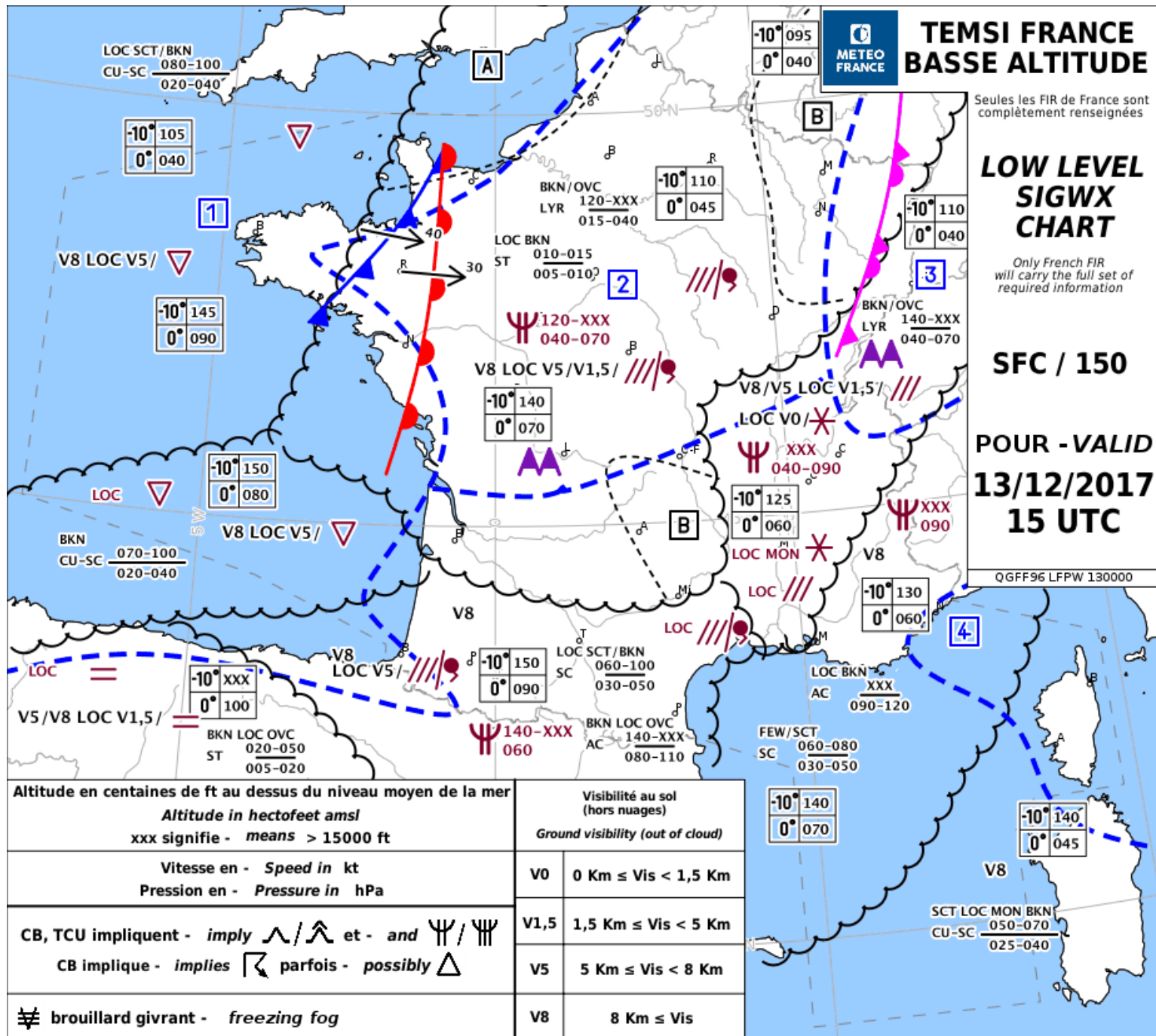
N4630 W00015 - N4715 W00015 - N4715 E00200 - N4700 E00215 - N4545

E00130 - N4445 W00145 SFC/FL050 MOV E 40KT INTSF=

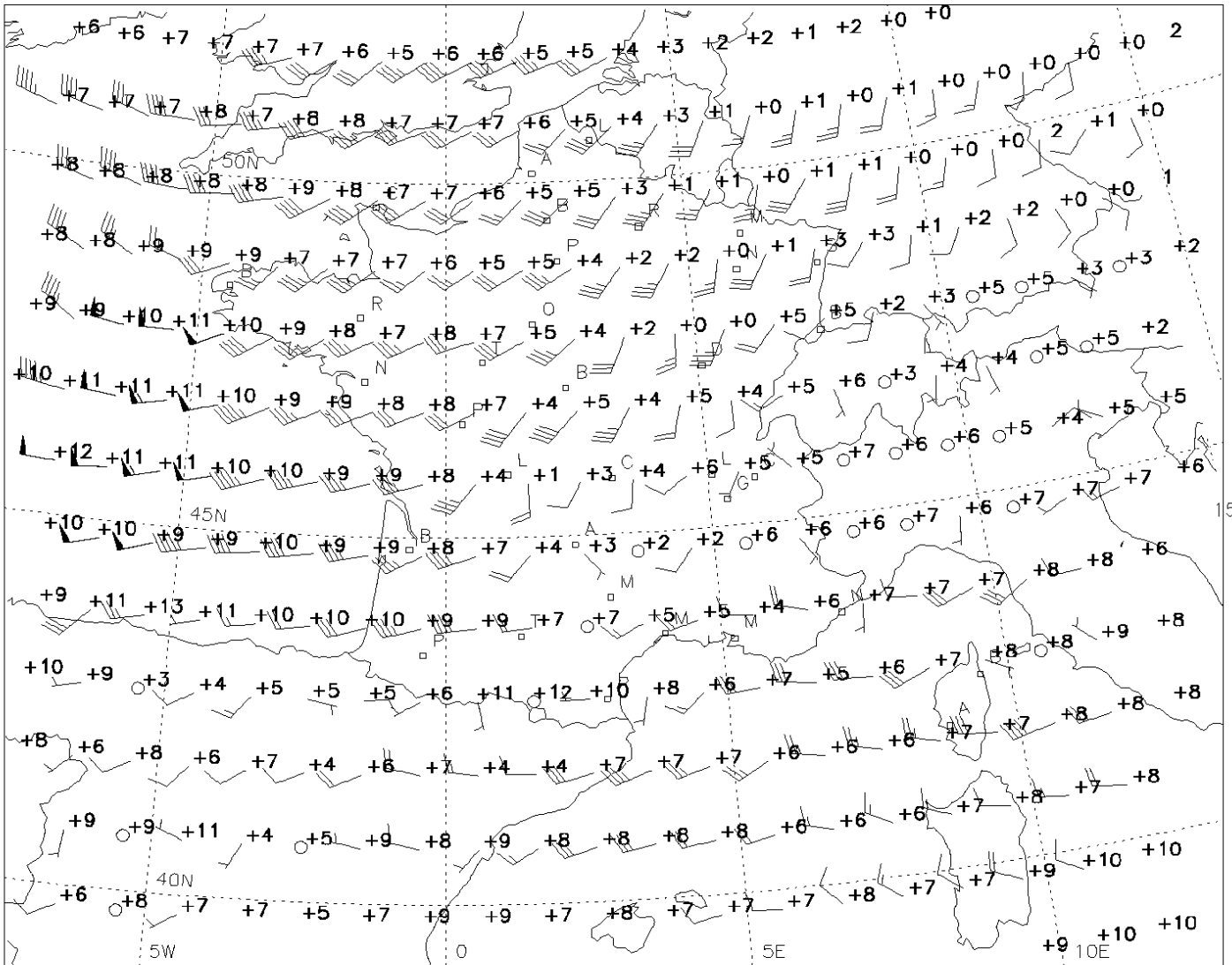
Les messages SIGMET présentés ici sont uniquement ceux conformes à l'Annexe 3 de l'OACI.

Pas de VAA pour : LFPW





- 1 \wedge 050 MON 100 SFC 30
- LOC MAR/COT \wedge 050 SFC
- LOC MON \circ
- 2 \wedge 040-060 SFC
- 3 \wedge LOC $\hat{\wedge}$ 060 SFC \circ
- 4 \wedge LOC $\hat{\wedge}$ 040 MON 100 SFC \circ
- MAR 30
- A ISOL EMBD CB $\frac{xxx}{015}$ \square ∇
- LOC V0/ \square ∇
- B LOC V0/ \times
- LOC \times
- LOC Ψ 040 SFC

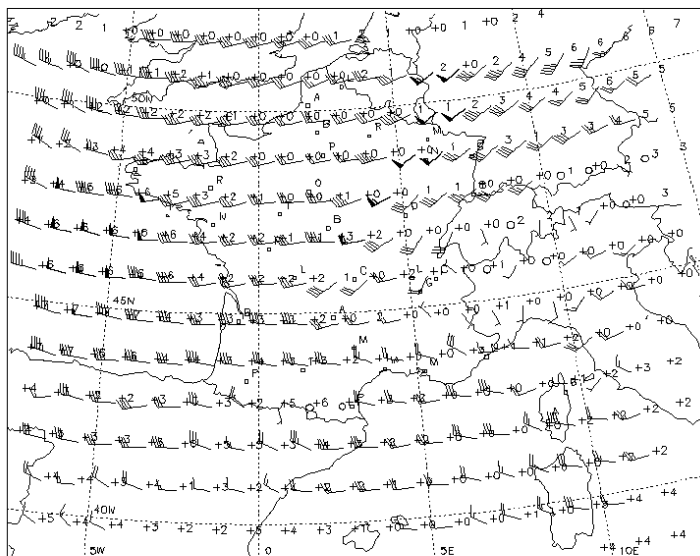


METEO FRANCE
 DATABASE METEO-FRANCE 1485

FL 020 (950 HPA)
 VALID WED 13/12/17 12 UTC

WIND (kt) / TEMP (C)
 TEMPERATURE NEGATIVE UNLESS PREFIXED BY "+"
 DATA TIME WED 13/12/17 00 UTC

QWFE70
LFPW
130000

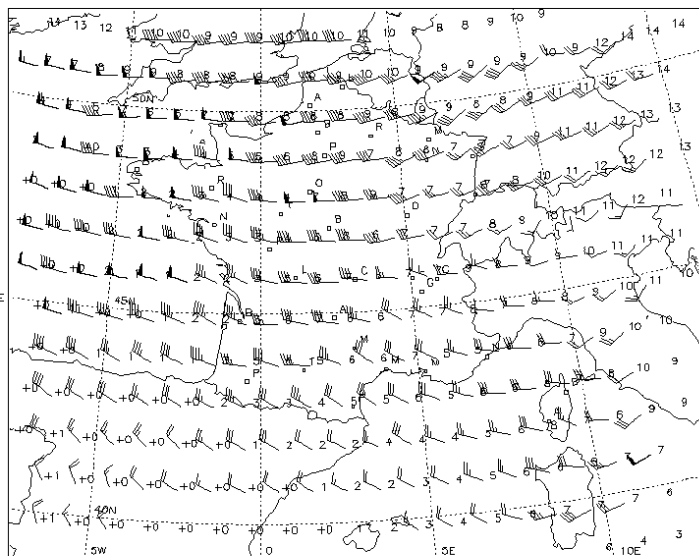


METEO FRANCE
 DATABASE METEO-FRANCE 1485

FL 050 (850 HPA)
 VALID WED 13/12/17 12 UTC

WIND (kt) / TEMP (C)
 TEMPERATURE NEGATIVE UNLESS PREFIXED BY "+"
 DATA TIME WED 13/12/17 00 UTC

QWFE70
LFPW
130000

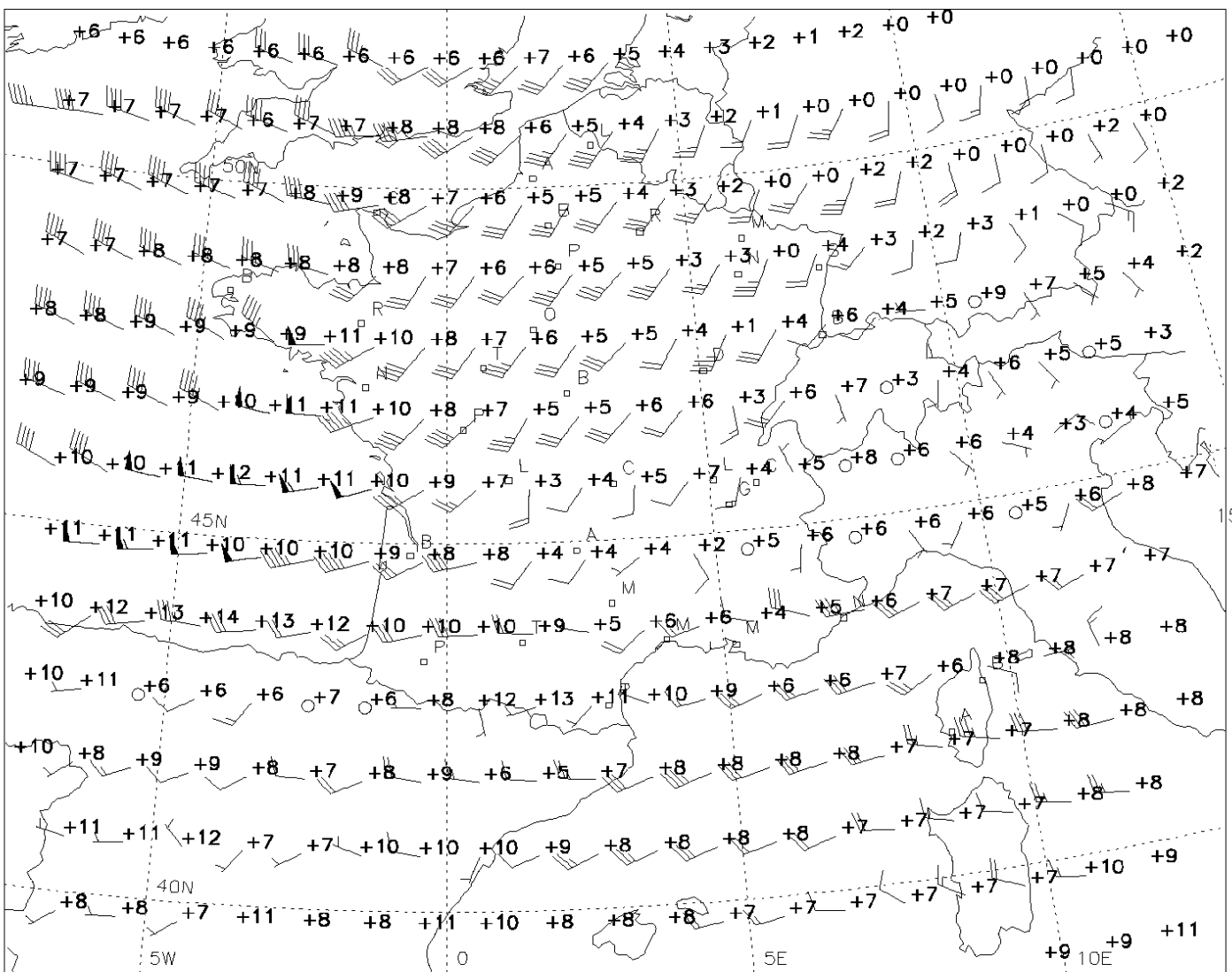


METEO FRANCE
 DATABASE METEO-FRANCE 1485

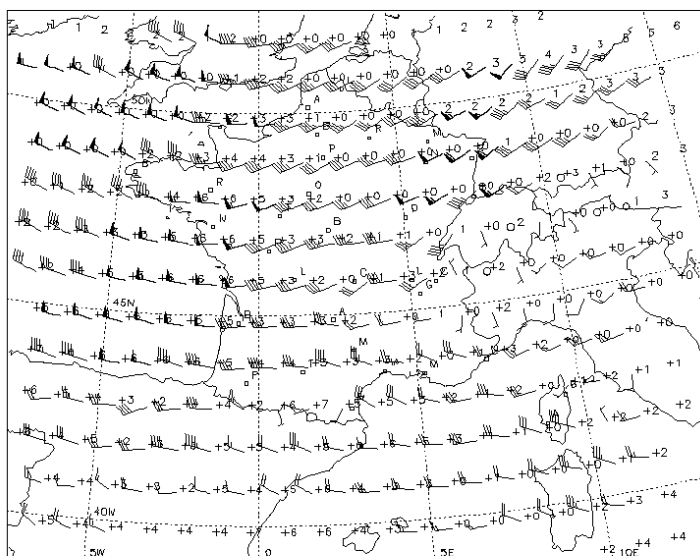
FL 100 (700 HPA)
 VALID WED 13/12/17 12 UTC

WIND (kt) / TEMP (C)
 TEMPERATURE NEGATIVE UNLESS PREFIXED BY "+"
 DATA TIME WED 13/12/17 00 UTC

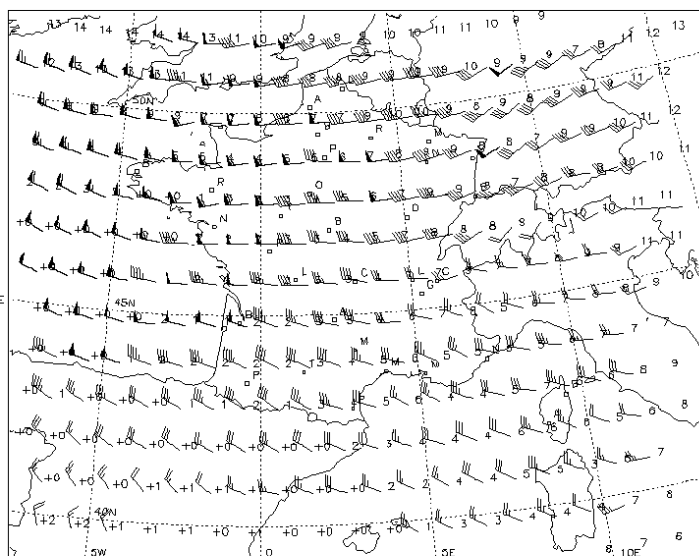
QWFE70
LFPW
130000



METEO FRANCE DATABASE METEO-FRANCE 1485
FL 020 (950 HPA)
VALID WED 13/12/17 15 UTC
 WIND (kt) / TEMP (C)
 TEMPERATURE NEGATIVE UNLESS PREFIXED BY "+"
 DATA TIME WED 13/12/17 00 UTC
QWFF70 LFPW 130000



METEO FRANCE DATABASE METEO-FRANCE 1485
FL 050 (850 HPA)
VALID WED 13/12/17 15 UTC
 WIND (kt) / TEMP (C)
 TEMPERATURE NEGATIVE UNLESS PREFIXED BY "+"
 DATA TIME WED 13/12/17 00 UTC
QWFF70 LFPW 130000



METEO FRANCE DATABASE METEO-FRANCE 1485
FL 100 (700 HPA)
VALID WED 13/12/17 15 UTC
 WIND (kt) / TEMP (C)
 TEMPERATURE NEGATIVE UNLESS PREFIXED BY "+"
 DATA TIME WED 13/12/17 00 UTC
QWFF70 LFPW 130000

